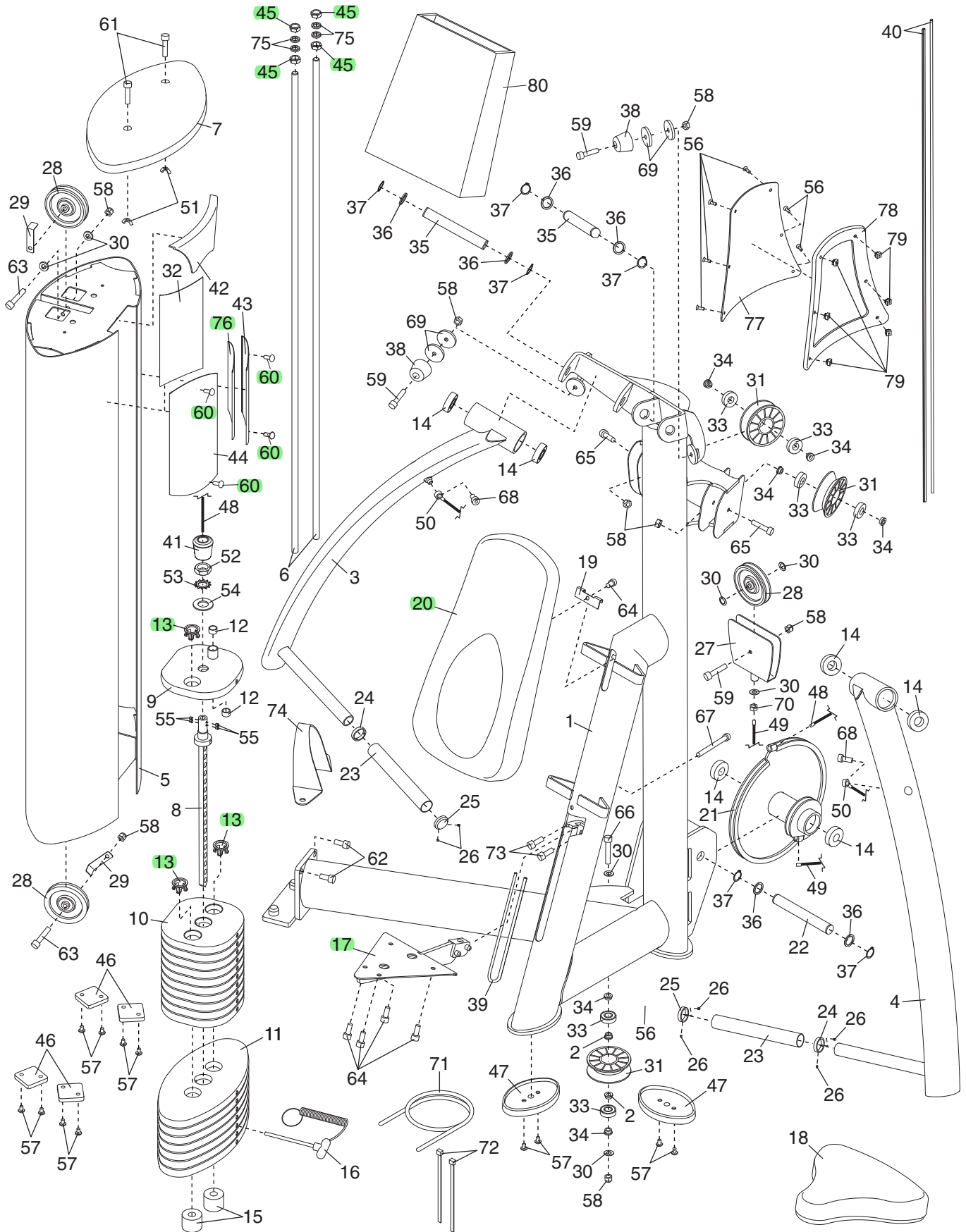


GZFI8003.6			
Key	Part Number	Description	Qty
1	GZ5464	FRAME	1
2	GZ1623	INTERNAL PIVOT BUSHING	2
3	GZ5585	RIGHT ARM	1
4	GZ5582	LEFT ARM	1
5	GZ5584	TOWER	1
6	GZ3248-10	GUIDE ROD	2
7	GZ3453	TOWER CAP	1
8	GZ5483	WEIGHT ROD	1
9	GZ7392	TOP WEIGHT	1
10	GZ30598	10-POUND PLATE	10
11	GZ30599	20-POUND PLATE	7
12	GZ1020	GUIDE BUSHING	2
13	GZ1391-01	WEIGHT INSERT	35
14	GZ1011-01	1" BEARING	6
15	GZ1678	WEIGHT BUMPER	2
16	GZ1754	WEIGHT PIN	1
17	GZ4403	SEAT FRAME	1
18	GZ5108-05	SEAT FRAME	1
19	GZ30020	BACKREST BRACKET	1
20	GZ5108-04	BACKREST	1
21	GZ5488	CAM	1
22	GZ3073-05	LONG PIVOT ROD	1
23	GZ1746	HANDGRIP	2
24	GZ1760	HANDGRIP RING	2
25	GZ1759	HANDLE ENDCAP	2
26	GZ1761	NO. 10 X 1/8" SET SCREW	8
27	GZ4186	"U"-BRACKET	1
28	GZ1003-08	PULLEY	3
29	GZ3102	CABLE GUARD	2
30	GZ1069	PULLEY WASHER	7
31	GZ1003-04	"V"-PULLEY	3
32	GZ30348	LONG PLATE FRAME	1
33	GZ1169-01	"V"-PULLEY BEARING	6
34	GZ1473	PIVOT BUSHING	6
35	GZ3073-04	SHORT PIVOT ROD	2
36	GZ1052	PIVOT WASHER	6
37	GZ1018-07	SNAP RING	6
38	GZ1111	ARM BUMPER	2
39	GZ1504	SHORT TRIM	1
40	GZ1504	LONG TRIM	2
41	GZ1353	COUPLER COVER	1
42	GZ3516	COVER	1
43	GZ1567	SHORT TOWER PLATE	1
44	GZ1566	LONG TOWER PLATE	1
45	GZ1084	GUIDE ROD NUT	4
46	GZ1517	TOWER FOOT	4
47	GZ1486	FRAME FOOT	2
48	GZ5020-02	TOWER CABLE	1
49	GZ5020-03	CAM CABLE	1
50	GZ5020-01	PRESS CABLE	1
51	GZ1430	WINGNUT	2
52	GZ1418	ROD NUT	1
53	GZ1419	STAR WASHER	1
54	GZ1431	ROD WASHER	1
55	GZ1673	SET SCREW	4
56	192770	1/4 X 3/4" FLAT HEAD SCRW	6
57	GZ1012-07	3/8 X 1/2" BUTTON SCREW	12
58	GZ1007	3/8" NYLON LOCKNUT	8
59	GZ1013-02	3/8 X 1 3/4" BOLT	3

60	GZ1021-01	RIVET	4
61	174796	1/4 X 1" BUTTON BOLT	2
62	GZ1009-03	1/2 X 1 1/4" BOLT	2
63	GZ1013-04	3/8 X 2" BOLT	2
64	GZ1014-01	3/8 X 1" NON-PATCH BOLT	5
65	GZ1013-05	3/8 X 2 1/2" BOLT	2
66	GZ1013-06	3/8 X 3" BOLT	1
67	GZ1014-07	3/8X6 1/2" NON-PATCH BOLT	1
68	GZ1013-03	3/8 X 1" BOLT	2
69	GZ3472	BUMPER SPACER	4
70	GZ1083	3/8" FINE-THREAD NUT	1
71	GZ0180	BUNGEE CORD	1
72	GZ1081	WIRE TIE	2
73	GZ1013-14	1/4 X 3/8" SCREW	2
74	GZ30218	ANCHOR STRAP	1
75	GZ1085	GUIDE ROD WASHER	4
76	GZ30347	SHORT PLATE FRAME	1
77	GZ30828	REAR ACCESS PANEL	1
78	GZ1751	REAR ACCESS GASKET	1
79	GZ1735	1/4" CAGE NUT	6
80	GZ5124-08	BACKREST COVER	1
	0	NON-ILLUSTRATED PARTS	0
		WHAT PART IS NEEDED?	
#	GZ7411	USER'S MANUAL	1
#	GZ7411FR	USER'S MANUAL	1
#	GZ7411G	USER'S MANUAL	1
#	GZ7411IT	USER'S MANUAL	1
#	GZ7411SP	USER'S MANUAL	1
#	GZ7462-05	DECAL, 10-POUND WARNING	1
		WHAT PART IS NEEDED?	
#	GZ7026	DECAL, PIN INSERT CAUTION	1
#	GZ7026FR	DECAL, PIN INSERT CAUTION	1
#	GZ7026G	DECAL, PIN INSERT CAUTION	1
#	GZ7026IT	DECAL, PIN INSERT CAUTION	1
#	GZ7026SP	DECAL, PIN INSERT CAUTION	1
		WHAT PART IS NEEDED?	
#	GZ7005	DCL, MOVING PARTS CAUTION	1
#	GZ7005FR	DCL, MOVING PARTS CAUTION	1
#	GZ7005G	DCL, MOVING PARTS CAUTION	1
#	GZ7005IT	DCL, MOVING PARTS CAUTION	1
#	GZ7005SP	DCL, MOVING PARTS CAUTION	1
		WHAT PART IS NEEDED?	
#	208842	DECAL, KEEP CLEAR CAUTION	1
#	GZ7274FR	DECAL, KEEP CLEAR CAUTION	1
#	GZ7274G	DECAL, KEEP CLEAR CAUTION	1
#	GZ7274IT	DECAL, KEEP CLEAR CAUTION	1
#	GZ7274SP	DECAL, KEEP CLEAR CAUTION	1

EXPLODED DRAWING—Model No. GZFI8003.6

R1006A



EXPLODED DRAWING—Model No. GZFI8003.6

R1006A

